

| You are in: Lozier Products > Products > Multi-Function System

Multi-Function System

Part Number:



Add Multi-Function components to your existing wall or island Gondola Shelving to increase capacity or to change the look of your display.

Product Details:

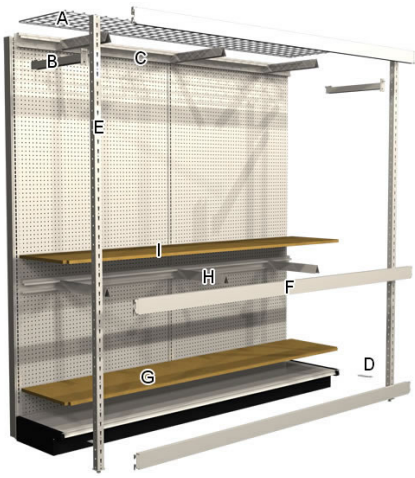
- Attaches to new or existing Gondola Shelving runs
- Designed for hand loading only

ORDERING INSTRUCTIONS

Add to Gondola island and wall sections as follows:

1. Determine height of island/wall Uprites and depth of Base Decks.
2. Order one set of Multi-Function Uprite components (Uprite, Uprite Brace, and Uprite Deck Connector) per desired Multi-Function Shelving Section, plus one set for the end; repeat for other side of section.
3. Order Multi-Function Shelf components (Shelf, Back Beam, Front Beam, and Shelf Supports) as required. Shelf depth is same as Base Deck depth.
4. Order optional Multi-Function Deck components (Particleboard Deck and Front Beam), if desired. Particleboard Deck rests on top of Steel Gondola Shelving Deck.

How to Order



WARNING: Multi-Function Beams are intended to be used with Multi-Function Shelf Supports. If Shelf Supports are not installed then the beams **MUST** utilize a Widespan Multi-Function Beam Locking Clip (WS1291 or WS9111) depending on the beam location. Failure to do this could allow the Beam to become disengaged causing product damage or personal injury.

COMPONENTS

- A** - Wire Grid Shelf
- B** - Upright Brace
- C** - Back Beam
- D** - Upright Deck Connector
- E** - Multi-Function Upright
- F** - Front Beam
- G** - Particleboard Deck
- H** - Shelf Support
- I** - Particleboard Shelf

Multi-Function Upright

- Post face slotted, allows shelf adjustment 2" on center
- Top Caps included on each Upright
- Top Beam can be installed flush with top of Upright
- Capacities based on use with Lozier Display Upright
- Extra Top Caps can be ordered
- Standard Duty MF Post and Gondola Upright combined - 4,000 lbs max
- Reinforced MF Post and Gondola Upright combined - 5,000 lbs max
- Beam locking hardware doesn't work in top slot



Product Options and Numbers

Example Part #: MFU 84 PK4 PLT

Multi-Function Upright : MFU

Height:72", 78", 84", 90", 96"

Style: Omit(Standard), RE (Reinforced)

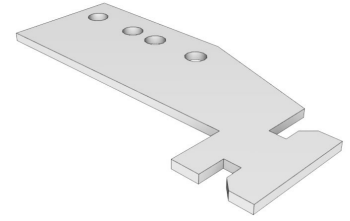
Pack: PK4

Standard Finish: PLT,Optional Catalog Colors

Suffix Key	
PLT	- Platinum

Multi-Function Upright to Deck Connector

- Rotates into back of post and bolts to display Deck
- Hardware included



Product Options and Numbers

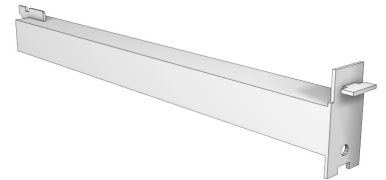
Example Part #: **MF1151PK4 PLT**

Standard Finish: **PLT**, Optional Catalog Colors

Suffix Key	
PLT	- Platinum

Multi-Function Upright Brace

- Attaches to post in field without tools or hardware
- Optional bolt included with each Brace



Product Options and Numbers

Example Part #: **MFUB 22 PLT**

Multi-Function Upright Brace: **MFUB**

Depth: 13", 16", 19", **22"**, 25", 28", 31"

Standard Finish: **PLT**, Optional Catalog Colors

Suffix Key	
PLT	- Platinum

Multi-Function Front/Back Beams

- Available in Regular Duty and Heavy Duty
- Heavy Duty Beams require Heavy Duty Shelf Supports



Product Options and Numbers

Example Part #: MF FB 96 PK4 PLT

Multi-Function Beam: MF

Beam Type: FB,BB

Section Width:36", 48", 72", 84", 96"

Style: Omit(Regular Duty), HD (Heavy Duty)

Pack: PK4(Regular Duty),Omit(Heavy Duty)

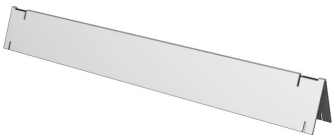
Standard Finish: PLT,Optional Catalog Colors

Suffix Key						
FB		- Front Beam				
BB		- Back Beam				
PLT		- Platinum				
Multi-Function Shelf Capacity (Evenly Distributed Load in Lbs)						
Shelf Depth	Section Width (Beam Length)	Number of Regular Duty Shelf Supports with Regular Duty Beams			Number of Heavy Duty Shelf Supports with Heavy Duty Beams	
Up to 31" Deep		2	3	4	2	3

36"	1,600	2,400	3,000	3,000	-
48	1,600	2,400	3,000	3,000	-
72"	1,600	2,000	2,400	-	3,000
84"	1,600	1,800	2,000	-	3,000
96"	1,600	1,600	1,600	-	3,000

Multi-Function Shelf Supports

- Heavy Duty Shelf Supports require Heavy Duty Beams



Product Options and Numbers

Example Part #: **MFWSS 22 PK10 PLT**

Multi-Function Shelf Support: **MFWSS**

Depth: 13", 16", 19", **22"**, 25", 28", 31"

Style:**Omit**(Regular Duty), HD (Heavy Duty)

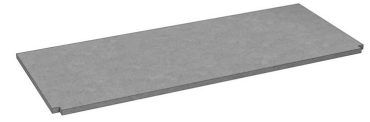
Pack: **PK10** (Regular Duty), PK6 (Heavy Duty)

Standard Finish: **PLT**,Optional Catalog Colors

Suffix Key	
PLT	- Platinum

Multi-Function Shelves and Decks

- One style fits both Regular Duty and Heavy Duty Beams
- Evenly distributed load up to 3,000 lbs (Dependent on Beam style and number of Shelf Supports)



PARTICLEBOARD SHELF (S), PARTICLEBOARD DECK (D)

- 5/8" industrial grade particleboard
- Pre-cut to fit Multi-Function sections
- Front corners notched to fit around MF Uprites

WIRE GRID (WG)

- 3 x 3 heavy gauge wire mat
- One piece construction on all sizes
- Continuous perimeter wire
- Fireproof
- Light penetration
- Water from sprinklers can flow through
- Cleanliness
- Available in Zinc coated wire

Product Options and Numbers

Example Part #: **MF S 22 96 N/A**

Multi-Function: **MF**

Shelf/Deck Style: **S**(Shelf), **D** (Deck), **WG** (Wire Grid)

Base Deck Depth: 13", 16", 19", **22"**, 25", 28", 31"

Multi-Function Section Width: 36", 48", 72", 84", **96"**

Standard Finish: N/A or S04 (Particleboard), ZNC (Wire Grid)

Suffix Key

N/A	- No Finish
S04	- Seal Coated

ZNC

- Zinc Coated