

| You are in: [Lozier Products](#) > [Products](#) > [Multi-Function](#)

Multi-Function

Part Number:



Add durability to your existing Wall or Island Gondola with Multi-Function components. Order one Multi-Function Upright Assembly per Multi-Function Shelving System plus one for the end, the number of Shelf Assemblies required and optional Particleboard Deck assemblies. Accessories available to increase functionality of your unit.

Product Details:

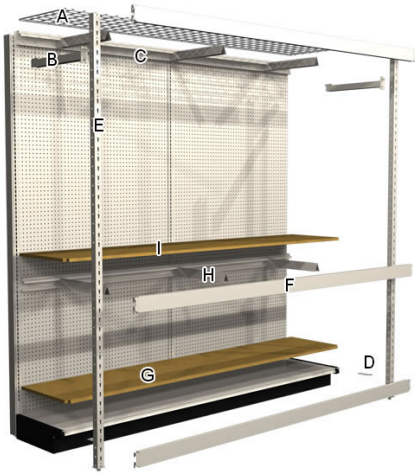
- Attaches to new or existing Shelving runs
- Designed for hand loading only

ORDERING INSTRUCTIONS

Add to Island and Wall Sections as follows:

1. Determine height of Island/Wall Uprights and depth of Base Decks
2. Order one Multi-Function Upright Assembly per desired Multi-Function Shelving Section, plus one for the end; repeat for other side of Island Section
3. Order Multi-Function Shelf Assemblies as required. Shelf depth is same as Base Deck depth
4. Order optional Particleboard Multi-Function Deck Assemblies, if desired. Particleboard Deck rests on top of Steel Display Shelving Deck

How to Order



WARNING: Multi-Function Beams are intended to be used with Multi-Function Shelf Supports. If Shelf Supports are not installed then the beams **MUST** utilize a Widespan Multi-Function Beam Locking Clip (WS1291 or WS9111) depending on the beam location. Failure to do this could allow the Beam to become disengaged causing product damage or personal injury.

COMPONENTS

- A** - Wire Grid Shelf
- B** - Uprite Brace
- C** - Back Beam
- D** - Uprite Deck Connector
- E** - Multi-Function Uprite
- F** - Front Beam
- G** - Particleboard Deck
- H** - Shelf Support
- I** - Particleboard Shelf

Multi-Function Uprite Assemblies

COMPONENTS:

- Multi-Function Upright
- Upright Brace
- Upright/Deck Connector (MF1151)



CAPACITY:

- Standard Duty MF Post and Gondola Upright combined - 4,000 lbs max.
- Reinforced MF Post and Gondola Upright combined - 5,000 lbs max.

Product Options and Numbers

Multi-Function Upright Assembly

Height:72", 78", 84", 90", 96"

Depth:13", 16", 19", 22", 25", 28", 31"

Style: Standard,Reinforced (Reinforced required above 84H)

Upright and Brace Standard Finish:PLT,Optional Catalog Colors

Deck Connector Standard Finish:PLT,Optional Catalog Colors

Suffix Key

PLT - Platinum

Multi-Function Upright



- Post face slotted, allows shelf adjustment 2" on center
- Top Caps included on each Uprite
- Top Beam can be installed flush with top of Uprite
- Capacities based on use with Lozier Display Uprite
- Extra Top Caps can be ordered
- Standard Duty MF Post and Gondola Uprite combined - 4,000 lbs max
- Reinforced MF Post and Gondola Uprite combined - 5,000 lbs max
- Beam locking hardware doesn't work in top slot

Product Options and Numbers

Example Part #: **MFU 84 PK4 PLT**

Multi-Function Uprite : MFU

Height:72", 78", **84"**, 90", 96"

Style: **Omit**(Standard), RE (Reinforced)

Pack: **PK4**

Standard Finish: **PLT**,Optional Catalog Colors

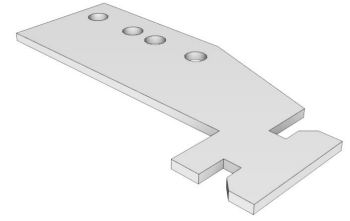
Suffix Key

PLT

- Platinum

Multi-Function Uprite to Deck Connector

- Rotates into back of post and bolts to display Deck
- Hardware included



Product Options and Numbers

Example Part #: **MF1151PK4 PLT**

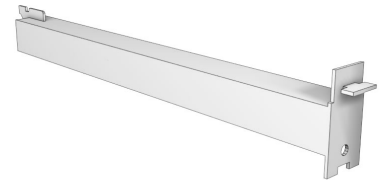
Standard Finish: **PLT**, Optional Catalog Colors

Suffix Key

PLT - Platinum

Multi-Function Upright Brace

- Attaches to post in field without tools or hardware
- Optional bolt included with each Brace



Product Options and Numbers

Example Part #: **MFUB 22 PLT**

Multi-Function Upright Brace: **MFUB**

Depth: 13", 16", 19", **22"**, 25", 28", 31"

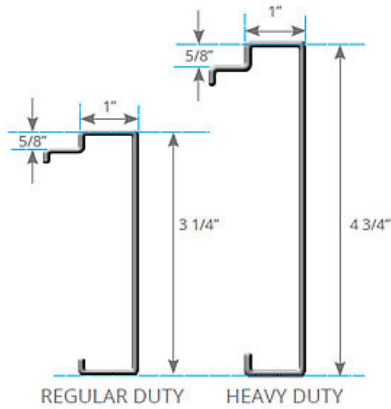
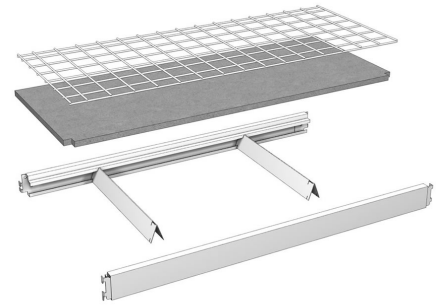
Standard Finish: **PLT**, Optional Catalog Colors

Suffix Key

PLT - Platinum

Multi-Function Shelf Assemblies

- Available in two types: Regular Duty and Heavy Duty
- Two Shelf styles available: Particleboard or Wire Grid
- If Shelf Supports are not used, Beam Locking Clips (WS1291 or WS9111) are required
- Regular Duty: 1,600 - 3,000 lbs evenly distributed
- Heavy Duty: 3,000 lbs max evenly distributed



INCLUDES

- 1 Multi-Function Front Beam
- 1 Multi-Function Back Beam
- 1 Multi-Function Shelf, Particleboard or Wire Grid

- Number of Shelf Supports required for customer application

Product Options and Numbers

Multi-Function Shelf Assembly

Shelf Type: Particleboard Shelf, Wiregrid Shelf

Depth: 13", 16", 19", 22", 25", 28", 31"

Width: 36", 48", 72", 84", 96"

Number of Shelf Supports: 2, 3, 4

Style: Regular Duty, Heavy Duty

Beam Standard Finish: PLT, Optional Catalog Colors

Shelf Support Standard Finish: PLT, Optional Catalog Colors

Shelf Standard Finish: Particle Board= N/A or S04 Wire Grid = ZNC

Suffix Key

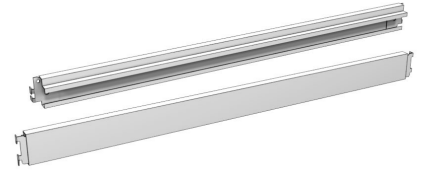
PLT	- Platinum
N/A	- No Finish
S04	- Seal Coated
ZNC	- Zinc Wire Grid

Multi-Function Shelf Capacity (Evenly Distributed Load in Lbs)

Shelf Depth	Section Width (Beam Length)	Number of Regular Duty Shelf Supports with Regular Duty Beams			Number of Heavy Duty Shelf Supports with Heavy Duty Beams	
		2	3	4	2	3
Up to 31" Deep						
	36"	1,600	2,400	3,000	3,000	-
	48	1,600	2,400	3,000	3,000	-
	72"	1,600	2,000	2,400	-	3,000
	84"	1,600	1,800	2,000	-	3,000
	96"	1,600	1,600	1,600	-	3,000

Multi-Function Front/Back Beams

- Heavy Duty Beams require Heavy Duty Shelf Supports



Product Options and Numbers

Example Part #: **MF FB 96 PK4 PLT**

Multi-Function Beam: MF

Beam Type: FB, BB

Section Width: 36", 48", 72", 84", 96"

Style: Omit(Regular Duty), HD (Heavy Duty)

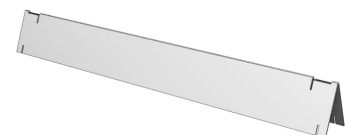
Pack: PK4(Regular Duty), Omit(Heavy Duty)

Standard Finish: PLT, Optional Catalog Colors

Suffix Key	
FB	- Front Beam
BB	- Back Beam
PLT	- Platinum

Multi-Function Shelf Supports

- Heavy Duty Shelf Supports require Heavy Duty Beams



Product Options and Numbers

Example Part #: **MFWSS 22 PK10 PLT**

Multi-Function Shelf Support: MFWSS

Depth: 13", 16", 19", **22"**, 25", 28", 31"

Style: Omit (Regular Duty), HD (Heavy Duty)

Pack: **PK10** (Regular Duty), PK6 (Heavy Duty)

Standard Finish: **PLT**, Optional Catalog Colors

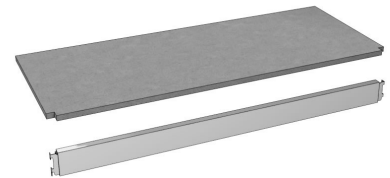
Suffix Key	
PLT	- Platinum

Multi-Function Deck Assembly

- Regular Duty or Heavy Duty Beam available

INCLUDES

- 1 Multi-Function Front Beam
- 1 Multi-Function Particleboard Deck



Product Options and Numbers

Multi-Function Deck Assembly

Depth: 13", 16", 19", 22", 25", 28", 31"

Width: 36", 48", 72", 84", 96"

Style: Regular Duty, Heavy Duty

Beam Standard Finish: PLT, Optional Catalog Colors

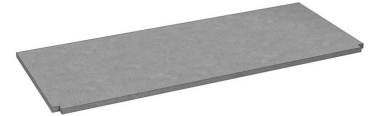
Deck Standard Finish: N/A, S04

Suffix Key	
PLT	- Platinum

N/A	- No Finish
S04	- Seal Coated

Multi-Function Shelves and Decks

- One style fits both Regular Duty and Heavy Duty Beams
- Evenly distributed load up to 3,000 lbs (Dependent on Beam style and number of Shelf Supports)



PARTICLEBOARD SHELF (S)/DECK (D)

- 5/8" industrial grade particleboard
- Pre-cut to fit Multi-Function sections
- Front corners notched to fit around MF Uprites

WIRE GRID (WG)

- 3 x 3 heavy gauge wire mat
- One piece construction on all sizes
- Continuous perimeter wire
- Fireproof
- Light penetration
- Water from sprinklers can flow through
- Cleanliness
- Available in Zinc coated wire

Product Options and Numbers

Example Part #: **MF S 22 96 N/A**

Multi-Function: MF

Shelf/Deck Style: S,D, WG

Base Deck Depth: 13", 16", 19", **22"**, 25", 28", 31"

Multi-Function Section Width:36", 48", 72", 84",**96"**

Standard Finish:N/A or S04 particleboard, ZNC wiregrid

Suffix Key	
N/A	- No Finish
S04	- Seal Coated
ZNC	- Zinc Wire Grid