

| You are in: Lozier Products > Products > Rx Undercounter Units

Rx Undercounter Units

Part Number:



Undercounter Units are made of welded steel construction. All units have an electrical access knockout and a 3"H recessed base painted CHR (except Rx Suspended Drawer).

Product Details:

- 24"W x 24"D x 38"H
- Welded steel construction
- Drawers equipped with self-closing roller glides
- Recessed black plastic door and drawer pulls
- All have electrical access knockouts and 3"H recessed base
- Rx Countertops are fastened to cabinets from underside, order separately
- Finished Undercounter Unit is 39"H

How to Order

Rx Drawer Unit

- 5 equal drawers, each 7”H with 5”H clearance
- Drawers equipped with recessed black plastic drawer pulls
- Evenly distributed load of 100 lbs per drawer
- Optional Card Followers ordered separately



Product Options and Numbers

Part #: **RX5DRRP 1S8**

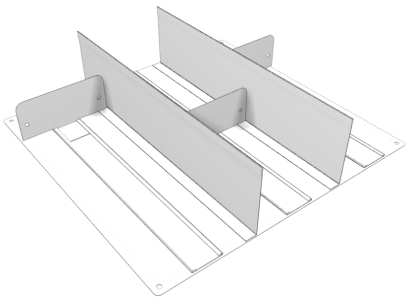
Rx Drawer Unit: **RX5DRRP**

Standard Finish: **1S8**

Suffix Key	
1S8	- White (WHT) body, Charcoal Black (CHR) base

Rx Card Follower

- Use with Drawer Unit or Prescription File Unit
- Maintains three rows 6 1/2”W per Drawer



Product Options and Numbers

Part #: **RXCF WHT**

Rx Card Follower: **RXCF**

Standard Finish: **WHT**

Suffix Key	
WHT	- White

Rx Open Storage Unit

- Two steel Shelves, adjust on 2" centers

Product Options and Numbers

Part #: **RXOPS 1S8**

Rx Open Storage Unit: **RXOPS**

Standard Finish: **1S8**



Suffix Key

1S8 - White (WHT) body, Charcoal Black (CHR) base

Rx Prescription File Unit

- 4 equal drawers, each 8 1/2"H with 6 1/2"H inside clearance
- Drawers equipped with recessed black plastic drawer pulls
- Evenly distributed load of 100 lbs per drawer
- Optional Card Followers ordered separately

Product Options and Numbers

Part #: **RX4DRPFRP 1S8**

Rx Prescription File Unit: **RX4DRPFRP**

Standard Finish: **1S8**



Suffix Key

1S8 - White (WHT) body, Charcoal Black (CHR) base

Rx Closed Storage Unit

- One 7"H drawer with inside clearance of 5"
- Two steel shelves, adjust on 2" centers
- Right-hand hinged door
- Evenly distributed load of 100 lbs per drawer
- Door and drawer have recessed black plastic pulls



Product Options and Numbers

Part #: **RXCSR**P 1S8

Rx Closed Storage Unit: **RXCSR**P

Standard Finish: **1S8**

Suffix Key

1S8 - White (WHT) body, Charcoal Black (CHR) base

Rx Sink Unit

- 7"D stainless steel sink, 14" D x 16" W Bowl
- Chrome plated faucet
- Right-hand hinged door
- Door has a recessed black plastic door pull



Product Options and Numbers

Part #: **RXSNK**RP 1S8

Rx Sink Unit: **RXSNK**RP

Standard Finish: **1S8**

Suffix Key

1S8 - White (WHT) body, Charcoal Black (CHR) base

Rx Vial Drawer Unit

- Two large capacity flat-bottom drawers, taper from 9 1/2”H at rear to 5”H at front
- Drawer fronts measure 7”H, opening above is 10”
- Each drawer includes four dividers adjustable 1” on center
- Drawers are equipped with recessed black plastic drawer pulls
- Evenly distributed load of 100 lbs per drawer



Product Options and Numbers

Part #: **RXVLD RP 1S8**

Rx Vial Drawer Unit: **RXVLD RP**

Standard Finish: **1S8**

Suffix Key	
1S8	- White (WHT) body, Charcoal Black (CHR) base

Rx Bottle Dispenser Unit

- Base drawer is 7”H with 7 1/2” clearance
- Upper shelves: 3 1/2”H
- Each drawer includes five dividers adjusting on 1” centers
- Drawers are equipped with recessed black plastic drawer pulls
- Evenly distributed load of 100 lbs per drawer



Product Options and Numbers

Part #: **RXBDRP 1S8**

Rx Bottle Dispenser Unit: **RXBDRP**

Standard Finish: **1S8**

Suffix Key	
1S8	- White (WHT) body, Charcoal Black (CHR) base

Rx Narcotics Unit

- 7”H locking external drawer with 3 1/4” clearance
- Two 1 1/2”H sliding internal trays with 8” clearance
- Four dividers on internal trays, 1” adjustability
- 10 1/2”H space at bottom of unit
- Right-hand hinged door with lock
- Evenly distributed load of 100 lbs per drawer



Product Options and Numbers

Part #: **RXNRCRP 1S8**

Rx Narcotics Unit: **RXNRCRP**

Standard Finish: **1S8**

Suffix Key	
1S8	- White (WHT) body, Charcoal Black (CHR) base

Rx Computer Unit

- Right-hand hinged perforated door for ventilation
- One internal slide-out shelf



Product Options and Numbers

Part #: **RXCPRRP 1S8**

Rx Computer Unit: **RXCPRRP**

Standard Finish: **1S8**

Suffix Key	
1S8	- White (WHT) body, Charcoal Black (CHR) base

Rx Printer Unit

- Sliding shelf supports large printer
- Printer opening: 20 7/16”W x 21”D x 30”H



Product Options and Numbers

Part #: **RXPRNT1161RP 1S8**

Rx Printer Unit: **RXPRNT1161RP**

Standard Finish: **1S8**

Suffix Key	
1S8	- White (WHT) body, Charcoal Black (CHR) base

Rx Refuse Unit

- 5 3/4” opening above door
- Two widths: 24”W & 12”W
- Right-hand hinged door
- Trash receptacle not included



Product Options and Numbers

Example Part #: **RXTR 12 RP 1S8**

Rx Refuse Unit: **RXTR**

Width: **12"**, omit if 24"

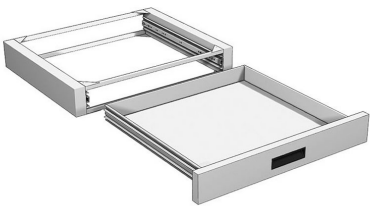
Recessed Pull: **RP**

Standard Finish: **1S8**

Suffix Key	
------------	--

Rx Suspended Drawer

- Inside of drawer measures 20 1/4"D x 1 3/4"H
- Front of drawer measures 23 7/8"W x 3 1/2"H
- Single drawer mounts to underside of Countertop
- Evenly distributed load of 100 lbs per drawer



Product Options and Numbers

Part #: **RXSPDRP** **WHT**

Rx Suspended Drawer: **RXSPDRP**

Drawer Standard Finish: **WHT**

Suffix Key	
WHT	- White