

| You are in: Lozier Products > Products > Widespan Tire Rack

# Widespan Tire Rack

Part Number:



This display for auto tires utilizes Widespan components.

## Product Details:

- 96 1/2" clearance between Upright posts if using WSB96 (8' Beam)
- Beam Locking Clips required
- One Shelf Support is required to tie beams together

**WARNING:** Shelving must be anchored to a suitable building wall, to the floor, or otherwise braced to prevent overturning when merchandising tall or heavy items which lean against the shelving. The weight and force of leaning items on unanchored or unbraced shelving may cause the shelving to overturn or collapse.

## How to Order

---



## COMPONENTS (ORDER SEPARATELY)

- A - Upright Frame #WSU\_ (two required)
- B - Beam #WSB\_ (six required)
- C - Shelf Support #WSSS\_ (three required)
- D (not pictured) - Floor Anchor #WS1241 GLV (optional)
- E - Beam Locking Clip #WS1291 STS (two required per beam)

## Widespan Upright Frame (One-Piece 48"H - 120"H)

---

- One-piece Upright Frames for units 48" - 120"
- Upright post slotted on face, allows shelf adjustment 2" on center
- Square holes punched on sides of Upright post for accessories
- Accessory holes punched 6" on center on face of Upright also aid beam placement
- Top Caps included on each Upright
- One Frame required for each section, plus one at end of each run
- To provide increased protection under harsh shipping conditions add "SPC" to part number for additional packaging
- Floor Anchors, Floor Protectors, or Back to Back Connectors may be ordered separately
- Evenly distributed load of 10,000 lbs per Upright Frame at 48" max. Beam spacing, vertically



## REINFORCED UPRIGHT FRAME

- “RE” Frame available in 72” - 120”H and all depths (lower Frame only on 132” - 192”)
- For use with hand loader/stacker
- Reduces chance of Frame damage
- Channel welded inside each post in lower 48”
- Welded foot plate for anchoring, 1/2” hole



## Product Options and Numbers

Example Part #: **WSU 18 048 RE SPC PLT**

**Widespan Upright :** **WSU**

**Depth:** **18**”, 24”, 30”, 36”, 42”, 48”

**Height:** **048**”, 060”, 072”, 084”, 096”, 120”

**Reinforced Upright for Hand Loader/ Stacker Applications:** **RE**, Leave blank if not applicable

**Additional Packaging:** **SPC**, Leave blank if not applicable

**Standard Finish:** **PLT**, Optional Catalog Colors

### Suffix Key

PLT

-Platinum

## Widespan Two-Piece Upright Frame (Taller than 120")

- Upright post slotted on face, allows shelf adjustment 2" on center
- Square holes punched on sides of Upright post for accessories
- Accessory holes punched 6" on center on face of Upright also aid beam placement
- Top Caps included on each Upright
- One Widespan Upright Frame required for each section, plus one at end of each run
- To provide increased protection under harsh shipping conditions add "SPC" to part number for additional packaging
- Floor Anchors, Floor Protectors, or Back to Back Connectors may be ordered separately
- Two-piece Widespan Upright Frame provides same rated load as One-Piece Widespan Upright
- Evenly distributed load of 10,000 lbs per Upright Frame at 48" max. Beam spacing, vertically

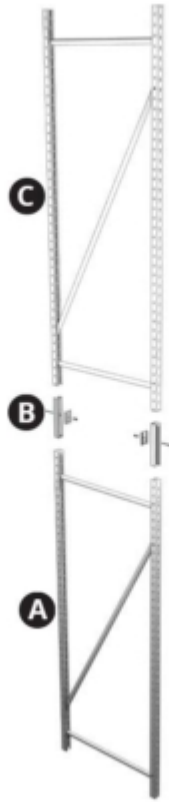


## REINFORCED UPRIGHT FRAME

- "RE" Frame available in 72" - 120"H and all depths (lower Frame only on 132" - 192")
- For use with hand loader/stacker
- Reduces chance of Frame damage
- Channel welded inside each post in lower 48"
- Welded foot plate for anchoring, 1/2" hole



## Product Options and Numbers



**COMPONENTS (ORDER SEPARATELY):**

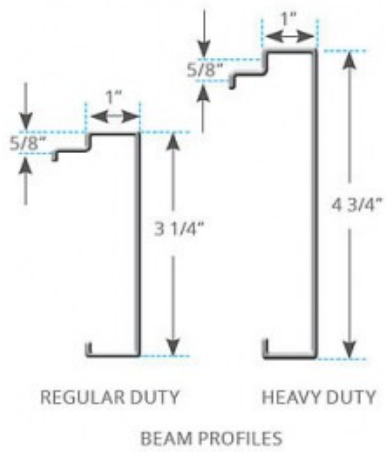
- A** - Widespan Upright Frame, Reinforced, #WSU\_RE (1 required)
- B** - Widespan Upright Connectors, #WSUC (2 required)
- C** - Widespan Frame, #WSU\_ (1 required)

## Widespan Beam

---

- Available in both Heavy Duty and Regular Duty
- Integral Beam connectors
- Tilt-in design, no fasteners or locking clips required when used with Shelf Support (WSSS)
- Minimum of four beams required per section: one each top, bottom, front and back of section
- Requires Shelf Supports to tie Beams together
- Minimum one Shelf Support on 48"W and 60"W Beams
- Minimum two on 72"W, 84"W and 96"W, or must use Locking Clips





## Product Options and Numbers

Example Part #: **WSB 48 PK4 PLT**

**Widespan Beam:** **WSB**

**Section Width:** **48"**, 60", 72", 84", 96"

**Beam Style:** HD (Heavy Duty), **Omit** (Regular Duty)

**Pack:** **PK4**

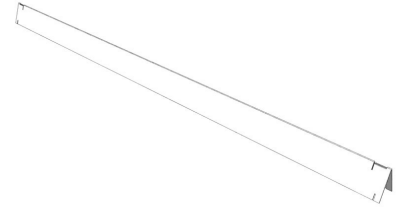
**Standard Finish:** **PLT**, Optional Catalog Colors

### Suffix Key

HD	-Heavy Duty Beam
PLT	-Platinum

## Widespan Shelf Support

- Available in Heavy Duty and Regular Duty
- Rotates into place inside Beam body
- Number of Supports required varies based on required load



## Product Options and Numbers

Example Part #: **WSSS 18 PK10 PLT**

**Widespan Shelf Support : WSSS**

**Upright Frame Depth: 18"**, 24", 30", 36", 42", 48"

**Beam Type:**Omit(Regular Duty), HD (Heavy Duty)

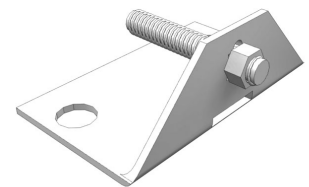
**Pack:**PK10 (Regular Duty), PK6 (Heavy Duty)

**Standard Finish: PLT**, Optional Catalog Colors

Suffix Key	
HD	-Heavy Duty
PLT	-Platinum

## Widespan Floor Anchor

- Heavy gauge steel angle fastens Upright Frame to floor
- Required when height-to-depth ratio exceeds 6 to 1
- Use as required to meet seismic anchoring specifications
- Upright mounting hardware included
- Anchor bolt not included



## Product Options and Numbers

Example Part #: **WS1241 GLV**

**Widespan Floor Anchor: WS1241**

**Standard Finish: GLV**

Suffix Key
------------

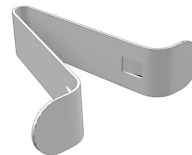
GLV

- Galvanized

## Widespan Beam Locking Clip

---

- Use for all beam locations other than in the top slot of the Uprite
- Snap into Uprite slots to prevent Beam movement
- Use at each end of Beam or where two adjacent Beams share same slot
- Must use when not using Shelf Supports (WSSS)



### Product Options and Numbers

Example Part #: **WS1291 STS**

Widespan Beam Locking Clip: **WS1291**

Standard Finish: **STS**

#### Suffix Key

**STS**

- Stainless Steel