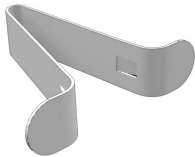


| You are in: [Lozier Products](#) > [Products](#) > [Widespan Beam Locking Clip](#)

# Widespan Beam Locking Clip

Part Number: **Part Number: WS1291**



Widespan Beam Locking Clips snap into Upright slots to prevent Beam movement. Use at each end of Beam or where two adjacent Beams meet in same slot. Clips must be used when not using Shelf Supports and can be used in any Beam location except the top slot of the Upright.

## Product Details:

- Use for all beam locations other than in the top slot of the Upright
- Snap into Upright slots to prevent Beam movement
- Use at each end of Beam or where two adjacent Beams share same slot
- Must use when not using Shelf Supports (WSSS)

## Product Options and Numbers

---

Example Part #: **WS1291 STS**

Widespan Beam Locking Clip: **WS1291**

Standard Finish: **STS**

Suffix Key

**STS**

- Stainless Steel