

| You are in: Lozier Products > Products > Widespan Two-Piece Upright Frame (Taller than 120")

Widespan Two-Piece Upright Frame (Taller than 120")

Part Number:



Widespan Upright Frame requires two-piece assemblies for units over 120".

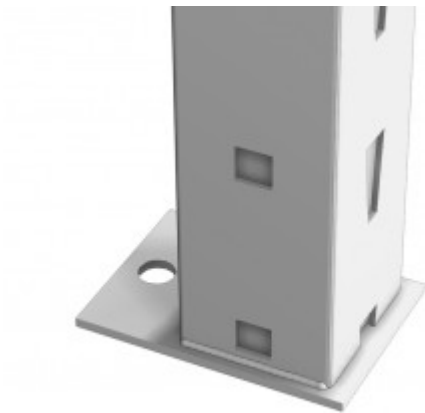
Product Details:

- Upright post slotted on face, allows shelf adjustment 2" on center
- Square holes punched on sides of Upright post for accessories
- Accessory holes punched 6" on center on face of Upright also aid beam placement
- Top Caps included on each Upright
- One Widespan Upright Frame required for each section, plus one at end of each run
- To provide increased protection under harsh shipping conditions add "SPC" to part number for additional packaging
- Floor Anchors, Floor Protectors, or Back to Back Connectors may be ordered separately
- Two-piece Widespan Upright Frame provides same rated load as One-Piece Widespan Upright
- Evenly distributed load of 10,000 lbs per Upright Frame at 48" max. Beam spacing, vertically

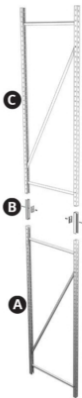
REINFORCED UPRIGHT FRAME

- "RE" Frame available in 72" - 120"H and all depths (lower Frame only on 132" - 192")
- For use with hand loader/stacker
- Reduces chance of Frame damage
- Channel welded inside each post in lower 48"

- Welded foot plate for anchoring, 1/2" hole



How to Order



COMPONENTS (ORDER SEPARATELY):

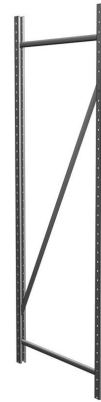
A - Widespan Upright Frame, Reinforced, #WSU_RE (1 required)

B - Widespan Upright Connectors, #WSUC (2 required)

C - Widespan Frame, #WSU_ (1 required)

Widespan Upright Frame (One-Piece 48"H - 120"H)

- One-piece Upright Frames for units 48" - 120"
- Upright post slotted on face, allows shelf adjustment 2" on center
- Square holes punched on sides of Upright post for accessories
- Accessory holes punched 6" on center on face of Upright also aid beam placement
- Top Caps included on each Upright
- One Frame required for each section, plus one at end of each run
- To provide increased protection under harsh shipping conditions add "SPC" to part number for additional packaging
- Floor Anchors, Floor Protectors, or Back to Back Connectors may be ordered separately
- Evenly distributed load of 10,000 lbs per Upright Frame at 48" max. Beam spacing, vertically



REINFORCED UPRIGHT FRAME

- "RE" Frame available in 72" - 120"H and all depths (lower Frame only on 132" - 192")
- For use with hand loader/stacker
- Reduces chance of Frame damage
- Channel welded inside each post in lower 48"
- Welded foot plate for anchoring, 1/2" hole



Product Options and Numbers

Example Part #: **WSU 18 048 RE SPC PLT**

Widespan Upright : **WSU**

Depth: 18", 24", 30", 36", 42", 48"

Height: 048", 060", 072", 084", 096", 120"

Reinforced Upright for Hand Loader/ Stacker Applications: RE, Leave blank if not applicable

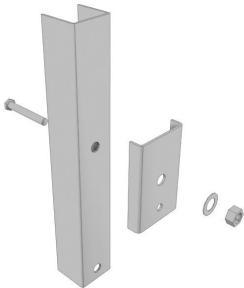
Additional Packaging: SPC, Leave blank if not applicable

Standard Finish: PLT, Optional Catalog Colors

Suffix Key	
PLT	-Platinum

Widespan Upright Connector

- Use to extend new or existing Upright Frames
- Already included with Two-Piece Upright Frames (132"- 192")
- Two Connectors required per Upright Frame (front and rear)



Product Options and Numbers

Example Part #: WSUC GLV

Widespan Upright Connector: WSUC

Standard Finish: GLV

Suffix Key	
GLV	- Galvanized