

| You are in: Lozier Products > Products > Widespan Shelving System

Widespan Shelving System

Part Number:



Widespan includes four basic components: Upright Frames, Beams, Shelf Supports, and Shelves. Widespan features a clear opening between Upright Frames, and Shelves are adjustable 2" on center.

Product Details:

- Shelves adjustable 2" on center
- No crossbracing required
- Welded Upright Frame

SIZE INFORMATION

- Clear opening between Upright Frames: Nominal shelf width plus 1/2"
- Overall length: (Nominal section width plus 1/2") times the number of sections, plus 1 3/4" for each post in the run
- Overall depth: 2 1/4" greater than the nominal depth of the unit
- Vertical clearance between shelves with a Regular Duty Beam: 3 1/4" less than the center-to-center shelf spacing
- Vertical clearance between shelves with a Heavy Duty Beam: 4 3/4" less than the center-to-center shelf spacing

WARNING: Widespan Beams are intended to be used with Widespan Shelf Supports. If Shelf Supports are not installed then the beams **MUST** utilize one of two Widespan Multi-Function Beam Locking Clip, WS1291 or WS9111, depending on the beam location. Failure to do this could allow the Beam to become disengaged causing product damage or personal injury.

PALLET LOADED WIDESPAN CONSIDERATIONS

- Forklifts must NOT be used, only a hand loader/stacker is safe to use
- Order “RE” Reinforced Upright Frames when planning to use hand loader/stacker
- Beam locking hardware required when using hand loader/stacker
- Shelf supports are required for all applications to stabilize beam. If not used then beam locking clip is required
- Aisle side Upright posts must be anchored to floor
- Total weight of palletized goods **MUST NOT** exceed one half of evenly distributed Beam capacity
- Allow at least 3” clearance between pallet and Upright Frame, at least 4” clearance between pallets
- Pallets should overhang both Beams by at least 2”, otherwise Particleboard or Wiregrid Shelves must be used

How to Order



COMPONENTS (ORDER SEPARATELY):

- A** - Upright Frames
- B** - Beams
- C** - Shelf Supports
- D** - Shelves

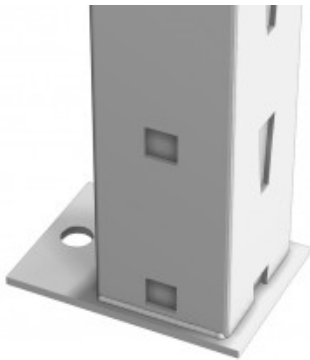
Widespan Upright Frame (One-Piece 48"H - 120"H)

- One-piece Upright Frames for units 48" - 120"
- Upright post slotted on face, allows shelf adjustment 2" on center
- Square holes punched on sides of Upright post for accessories
- Accessory holes punched 6" on center on face of Upright also aid beam placement
- Top Caps included on each Upright
- One Frame required for each section, plus one at end of each run
- To provide increased protection under harsh shipping conditions add "SPC" to part number for additional packaging
- Floor Anchors, Floor Protectors, or Back to Back Connectors may be ordered separately
- Evenly distributed load of 10,000 lbs per Upright Frame at 48" max. Beam spacing, vertically



REINFORCED UPRIGHT FRAME

- "RE" Frame available in 72" - 120"H and all depths (lower Frame only on 132" - 192")
- For use with hand loader/stacker
- Reduces chance of Frame damage
- Channel welded inside each post in lower 48"
- Welded foot plate for anchoring, 1/2" hole



Product Options and Numbers

Example Part #: **WSU 18 048 RE SPC PLT**

Widespan Upright : [WSU](#)

Depth: [18](#)", 24", 30", 36", 42", 48"

Height: [048](#)", 060", 072", 084", 096", 120"

Reinforced Upright for Hand Loader/ Stacker Applications: [RE](#), Leave blank if not applicable

Additional Packaging: [SPC](#), Leave blank if not applicable

Standard Finish: [PLT](#), Optional Catalog Colors

Suffix Key	
PLT	-Platinum

Widespan Two-Piece Upright Frame (Taller than 120")

- Upright post slotted on face, allows shelf adjustment 2" on center
- Square holes punched on sides of Upright post for accessories
- Accessory holes punched 6" on center on face of Upright also aid beam placement
- Top Caps included on each Upright
- One Widespan Upright Frame required for each section, plus one at end of each run
- To provide increased protection under harsh shipping conditions add "SPC" to part number for additional packaging
- Floor Anchors, Floor Protectors, or Back to Back Connectors may be ordered separately
- Two-piece Widespan Upright Frame provides same rated load as One-Piece Widespan Upright
- Evenly distributed load of 10,000 lbs per Upright Frame at 48" max. Beam spacing, vertically

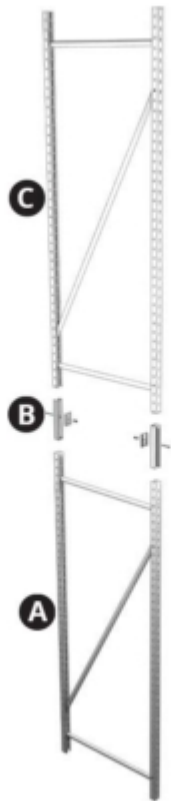


REINFORCED UPRIGHT FRAME

- "RE" Frame available in 72" - 120"H and all depths (lower Frame only on 132" - 192")
- For use with hand loader/stacker
- Reduces chance of Frame damage
- Channel welded inside each post in lower 48"
- Welded foot plate for anchoring, 1/2" hole



Product Options and Numbers

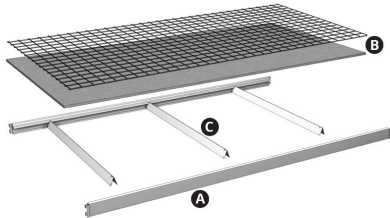


COMPONENTS (ORDER SEPARATELY):

- A** - Widespan Upright Frame, Reinforced, #WSU_RE (1 required)
- B** - Widespan Upright Connectors, #WSUC (2 required)
- C** - Widespan Frame, #WSU_ (1 required)

Widespan Shelf Assembly

- Available in two types: Particleboard and Wire Grid
- Available in Regular and Heavy Duty
- Load capacity per pair of Beams with appropriate Shelf Supports and uniformly distributed load:
 - Regular Duty: 1,600-3,000 lbs
 - Heavy Duty: 3,000 lbs max



INCLUDES:

- A** - Widespan Beam (2 included)
B - Widespan Shelf: Particleboard or Wire Grid (1 included)
C - Widespan Shelf Support (See load chart below for quantity)

WIDESPAN SHELF CAPACITY(Uniformly Distributed Load, lbs)						
Section Depth	Section Width (Beam Length)	# of Regular Duty Shelf Supports With Regular Duty Beams			# of Heavy Duty Shelf Supports with Heavy Duty Beams	
		2	3	4	2	3
Up to 36" D	48"	1,600	2,400	3,000	3,000	---
	60"	1,600	2,400	2,400	---	3,000
	72"	1,600	2,000	2,400	---	3,000
	84"	1,600	1,800	2,000	---	3,000
	96"	1,600	1,600	1,600	---	3,000
42" D	48"	1,370	2,055	2,740	---	3,000
	60"	1,370	2,055	2,400	---	3,000
	72"	1,370	2,000	2,200	---	3,000
	84"	1,370	1,800	1,600	---	3,000
	96"	1,370	1,600	1,600	---	3,000

Up to 48" D	48"	1,200	1,800	2,400	---	3,000
	60"	1,200	1,800	2,400	---	3,000
	72"	1,200	1,800	2,000	---	3,000
	84"	1,200	1,700	1,800	---	3,000
	96"	1,200	1,600	1,600	---	3,000

Product Options and Numbers

Widespan Shelf Assembly

Shelf Type : Particleboard or Wiregrid

Section Depth:18", 24", 30", 36", 42", 48"

Section Width:48", 60", 72", 84", 96"

Number of Shelf Supports: 2, 3, 4, (see above Load Chart)

Beam & Shelf Support Style: RD, HD

Beam Standard Finish: PLT, Optional Catalog Colors

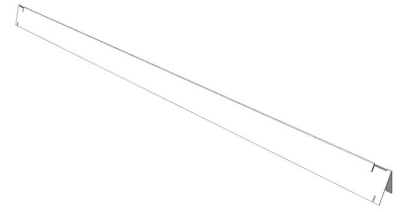
Shelf Support Standard Finish: PLT, Optional Catalog Colors

Shelf Standard Finish: N/A, S04, ZNC

Suffix Key	
RD	-Regular Duty
HD	-Heavy Duty
PLT	-Platinum
N/A	-No Finish
S04	-Seal Coated
ZNC	-Zinc Wire Grid

Widespan Shelf Support

- Available in Heavy Duty and Regular Duty
- Rotates into place inside Beam body
- Number of Supports required varies based on required load



Product Options and Numbers

Example Part #: **WSSS 18 PK10 PLT**

Widespan Shelf Support : **WSSS**

Upright Frame Depth: **18"**, 24", 30", 36", 42", 48"

Beam Type: **Omit** (Regular Duty), HD (Heavy Duty)

Pack: **PK10** (Regular Duty), PK6 (Heavy Duty)

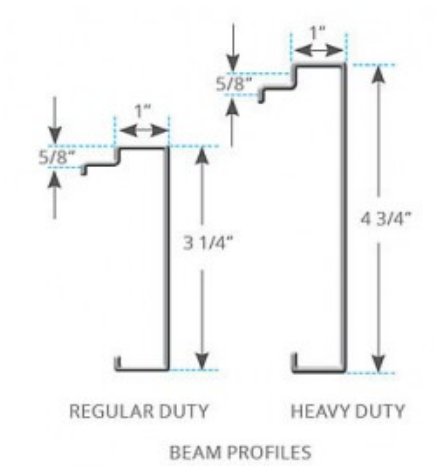
Standard Finish: **PLT**, Optional Catalog Colors

Suffix Key	
HD	-Heavy Duty
PLT	-Platinum

Widespan Beam

- Available in both Heavy Duty and Regular Duty
- Integral Beam connectors
- Tilt-in design, no fasteners or locking clips required when used with Shelf Support (WSSS)
- Minimum of four beams required per section: one each top, bottom, front and back of section
- Requires Shelf Supports to tie Beams together
- Minimum one Shelf Support on 48"W and 60"W Beams
- Minimum two on 72"W, 84"W and 96"W, or must use Locking Clips





Product Options and Numbers

Example Part #: **WSB 48 PK4 PLT**

Widespan Beam: **WSB**

Section Width: **48"**, 60", 72", 84", 96"

Beam Style: HD (Heavy Duty), **Omit** (Regular Duty)

Pack: **PK4**

Standard Finish: **PLT**, Optional Catalog Colors

Suffix Key	
HD	-Heavy Duty Beam
PLT	-Platinum